



Palm Harbor Homes

COPYRIGHT © 2019  
Palm Harbor Homes, Inc.  
All Rights Reserved

Plant Location: 310-Millersburg  
Customer: COTATI

Drawn By:  
Date: 11-21-19

Series: X

Model Number: ELEVATION

Page Number: MH-1

Designation:

**LOT 1**

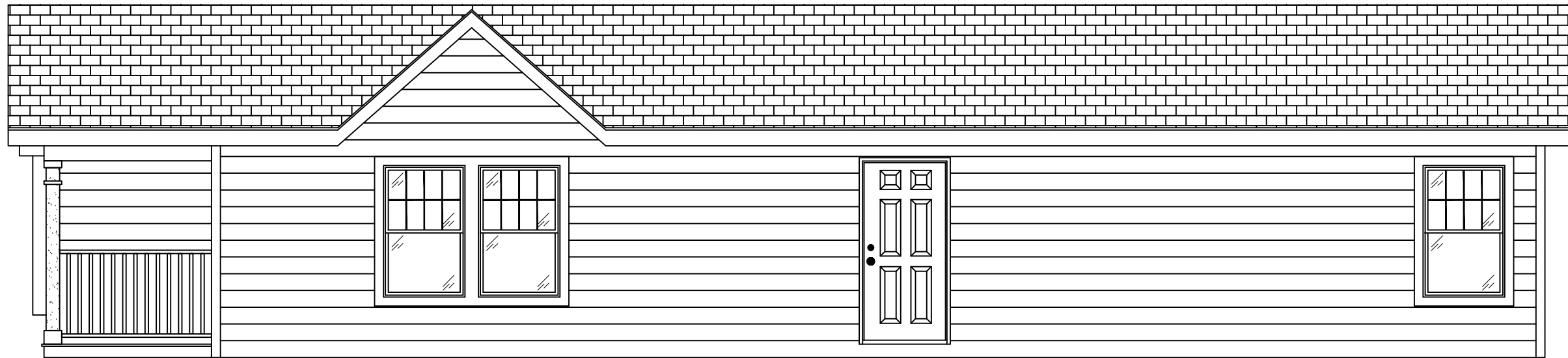
Rev. By: --  
Revision: --

Approvals

P.E.

3rd Party:

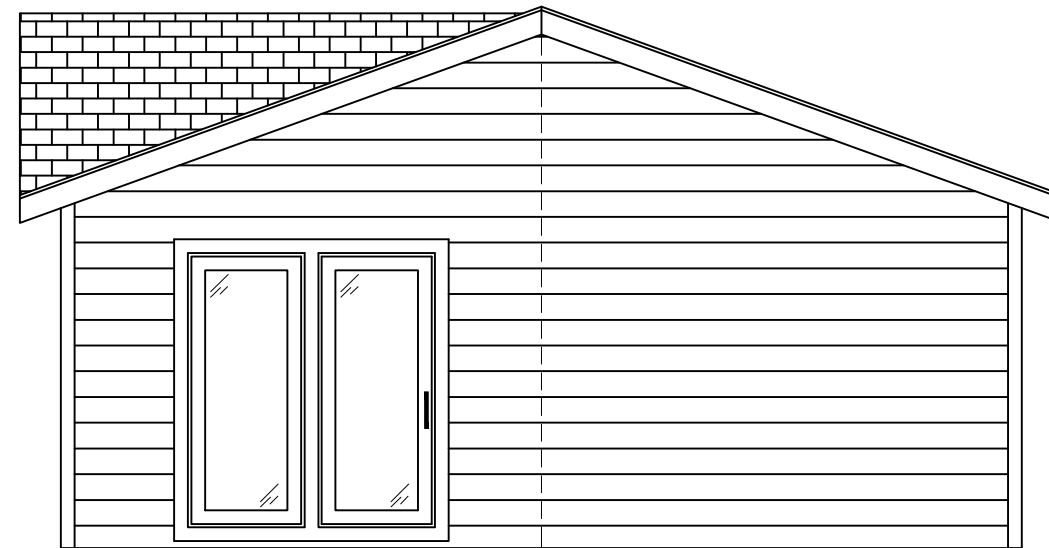
State:



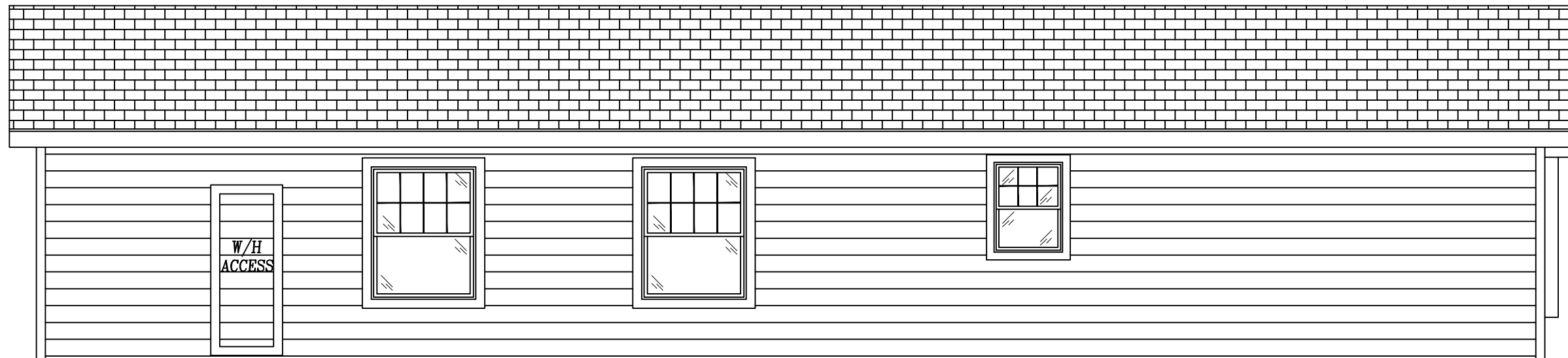
Right Elevation



Front Elevation  
4/12 Roof Pitch



Rear Elevation



Left Elevation



Palm Harbor Homes

COPYRIGHT © 2019  
Palm Harbor Homes, Inc.  
All Rights Reserved

Plant Location: **310-Millersburg**  
Customer: **COTATI**

Drawn By:  
Date: **11-21-19**

Series: **X**

Model Number: **ELEVATION**

Page Number: **MH-2**

Designation:

**LOT 2**

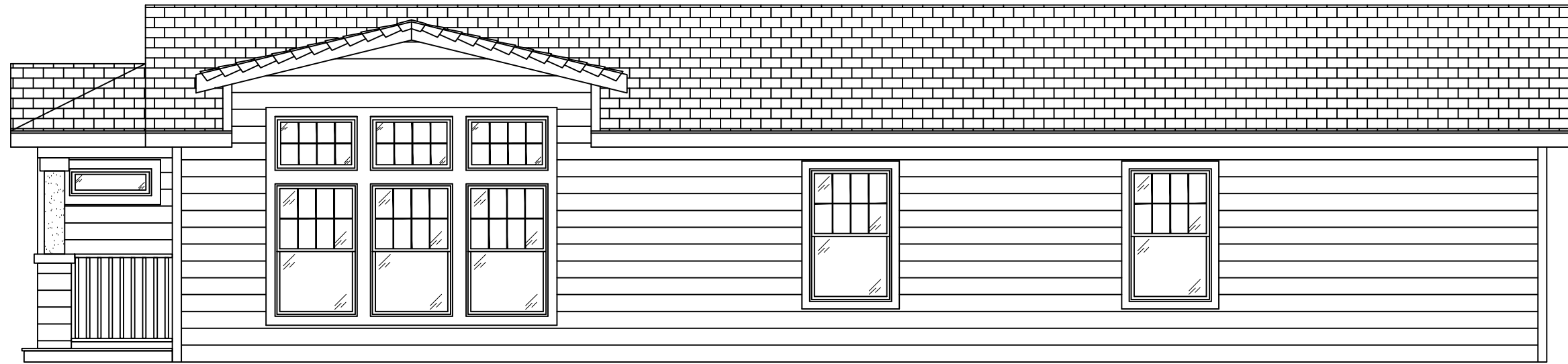
Rev. By: --  
Revision: --

Approvals

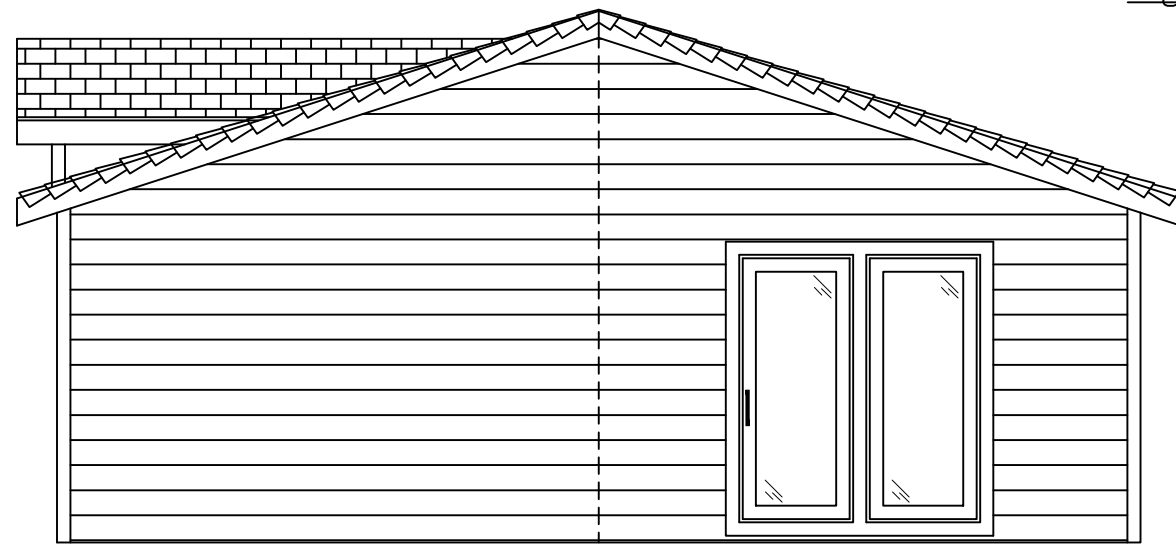
P.E.

3rd Party:

State:



Right Elevation



Rear Elevation



Front Elevation  
4/12 Roof Pitch



Left Elevation



Palm Harbor Homes

COPYRIGHT © 2019  
Palm Harbor Homes, Inc.  
All Rights Reserved

Plant Location: 310-Millersburg  
Customer: COTATI

Drawn By:  
Date: 11-21-19

Series: X

Model Number: ELEVATION

Page Number: MH-3

Designation:

**LOT 3**

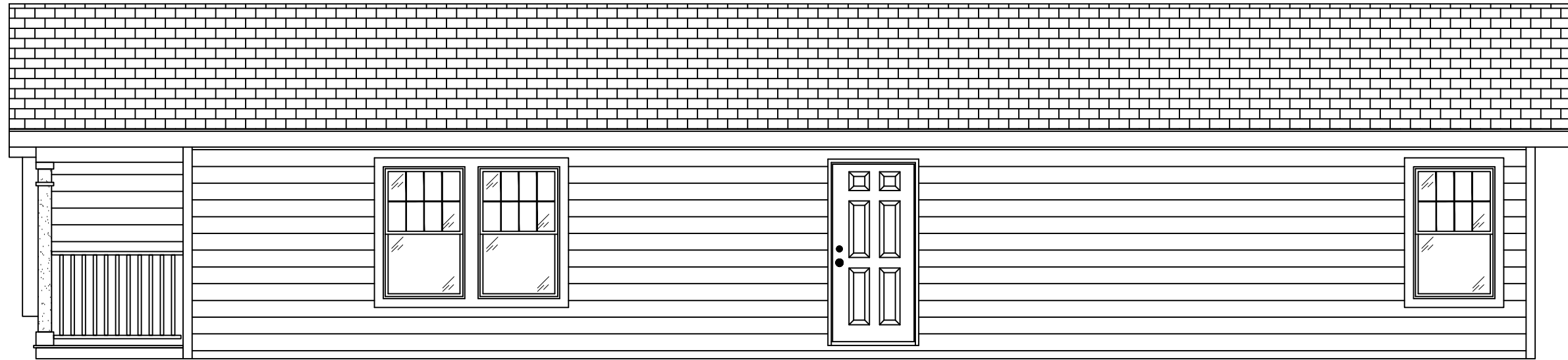
Rev. By: --  
Revision: --

Approvals

P.E.

3rd Party:

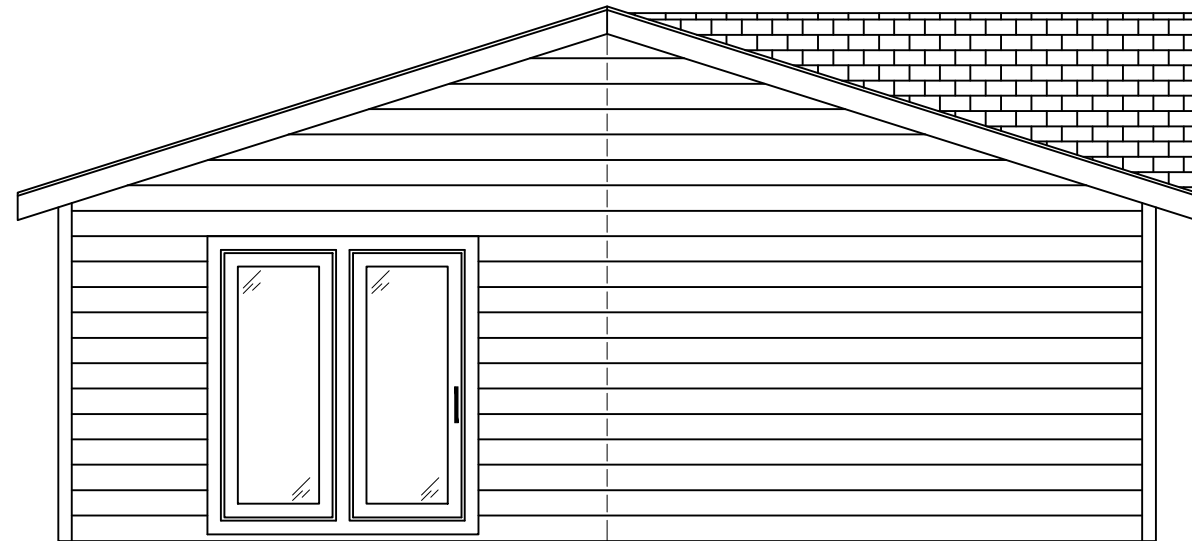
State:



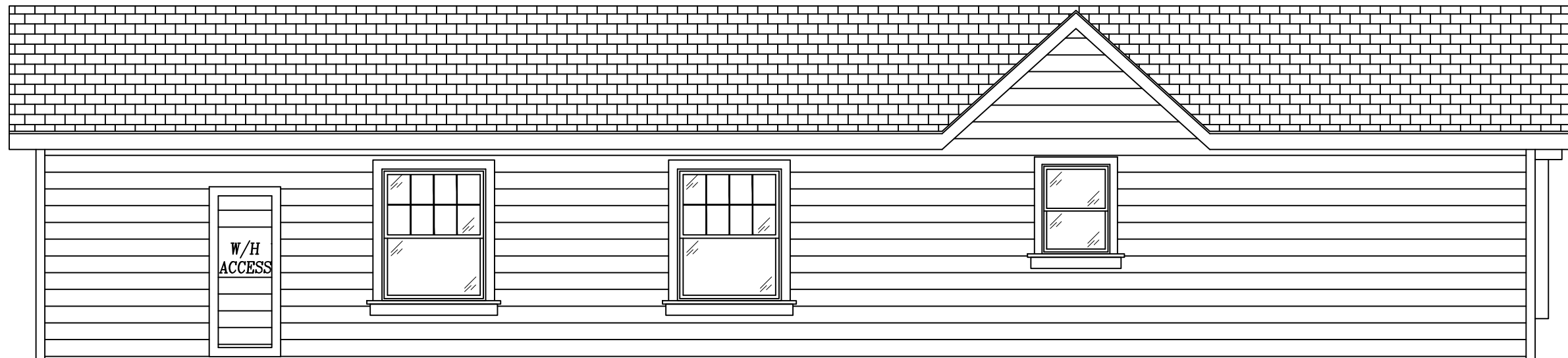
Left Elevation



Front Elevation  
4/12 Roof Pitch



Rear Elevation



Right Elevation



Palm Harbor Homes

COPYRIGHT © 2019  
Palm Harbor Homes, Inc.  
All Rights Reserved

Plant Location: 310-Millersburg  
Customer: COTATI

Drawn By:  
Date: 11-21-19

Series: X

Model Number: ELEVATION

Page Number: MH-4

Designation:

**LOT 4**

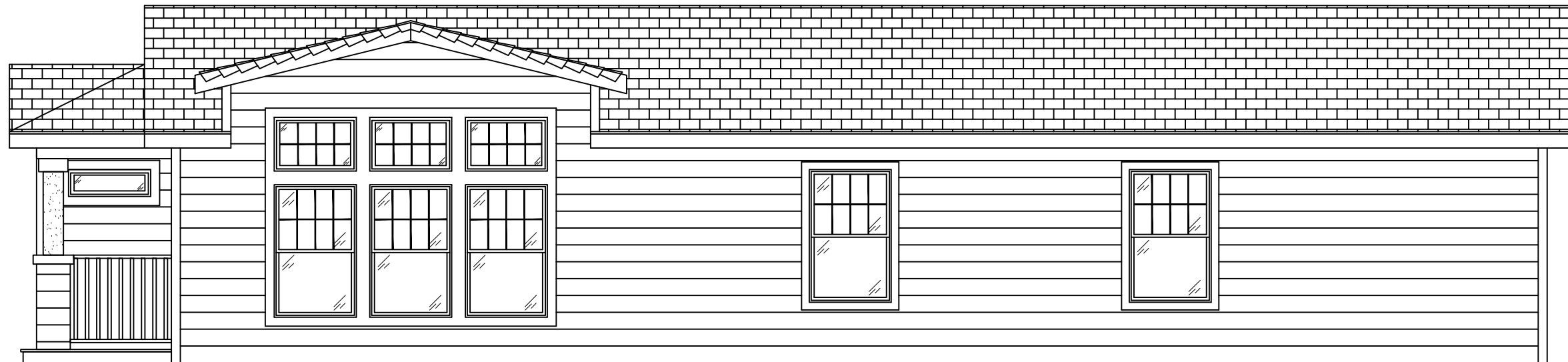
Rev. By: --  
Revision: --

Approvals

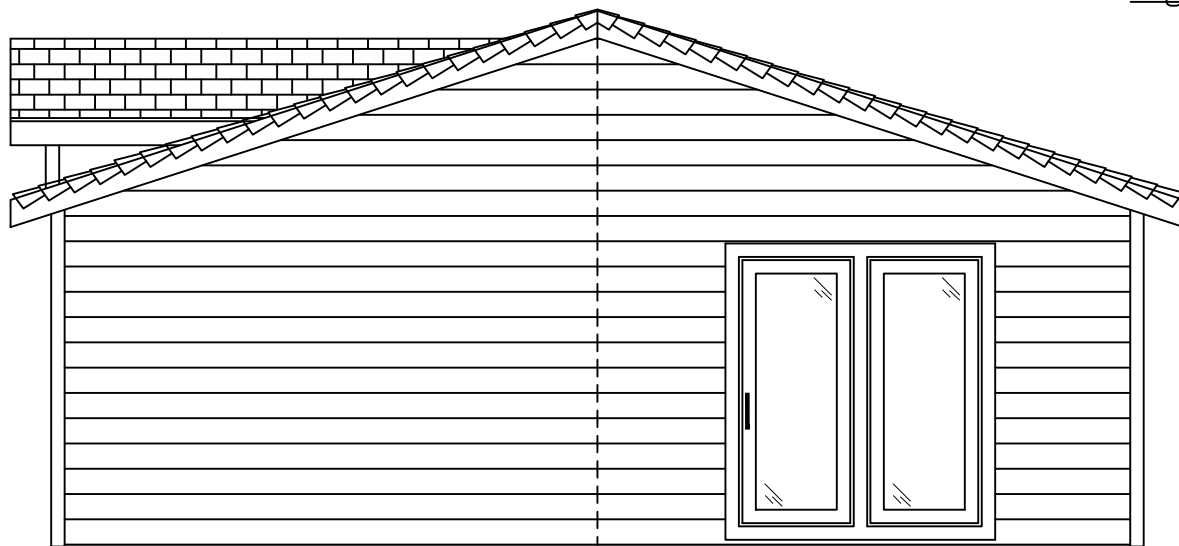
P.E.

3rd Party:

State:



Right Elevation



Rear Elevation



Front Elevation  
4/12 Roof Pitch



Left Elevation



**Palm Harbor Homes**

COPYRIGHT © 2019  
Palm Harbor Homes, Inc.  
All Rights Reserved

Plant Location: **310-Millersburg**  
Customer: **COTATI**

Drawn By:  
Date: **11-21-19**

Series: **X**

Model Number: **ELEVATION**

Page Number: **MH-5**

Designation:  
**LOT 5**

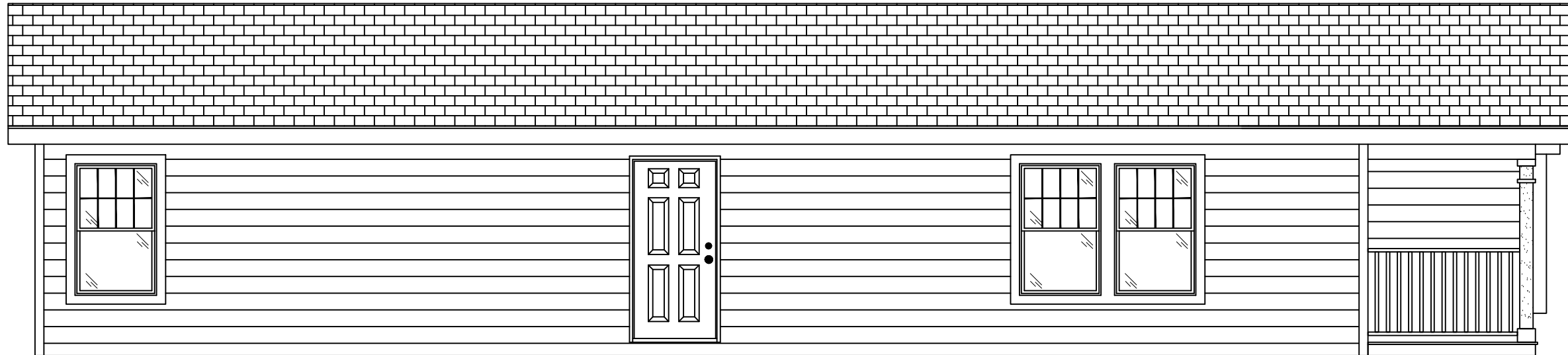
Rev. By: --  
Revision: --

**Approvals**

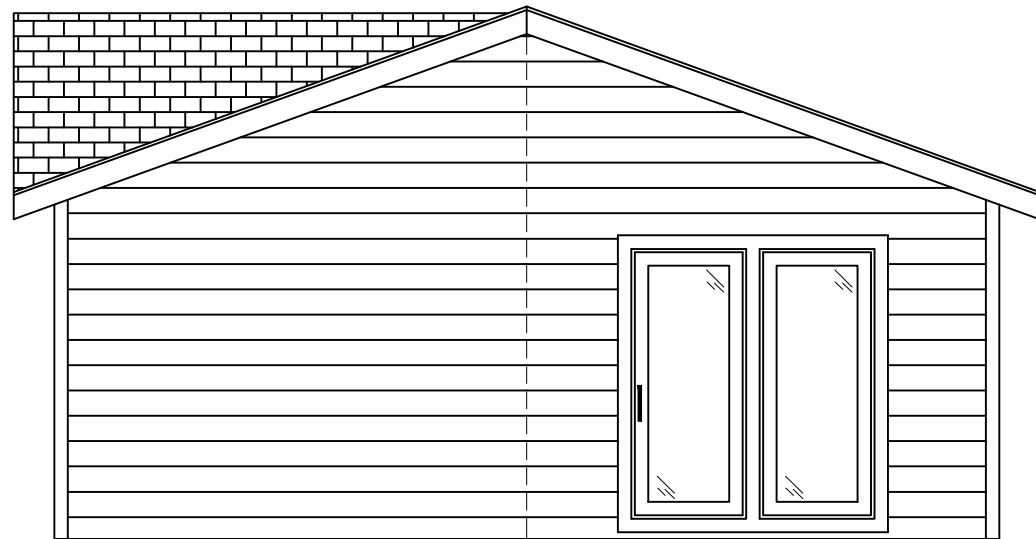
P.E.

3rd Party:

State:



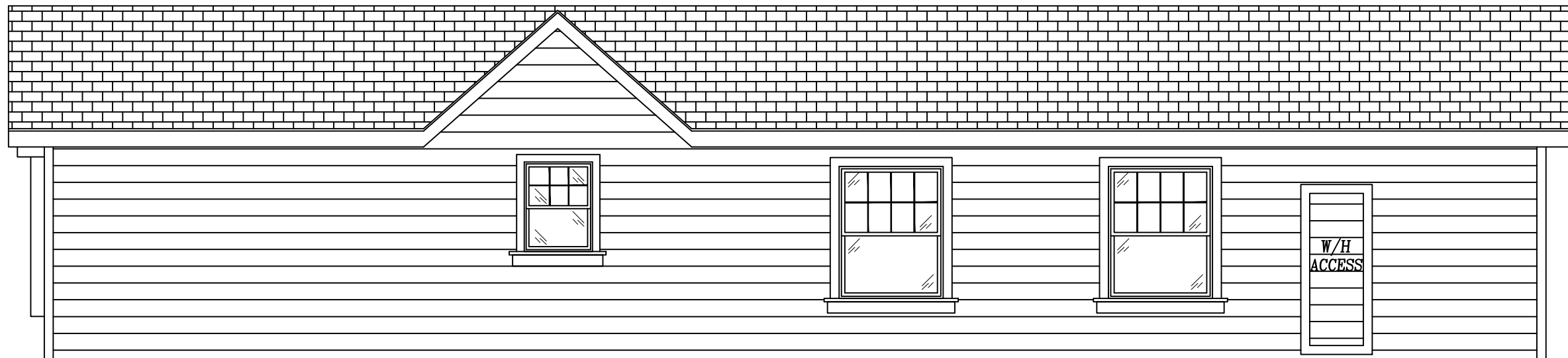
Left Elevation



Rear Elevation



Front Elevation  
4/12 Roof Pitch



Right Elevation



Palm Harbor Homes

COPYRIGHT © 2019  
Palm Harbor Homes, Inc.  
All Rights Reserved

Plant Location: 310-Millersburg  
Customer: COTATI

Drawn By:  
Date: 11-21-19

Series: X

Model Number: ELEVATION  
Page Number: MH-6

Designation:  
**FLOOR PLANS  
&  
FRONT ELEVATIONS**

Rev. By: --  
Revision: --

Approvals

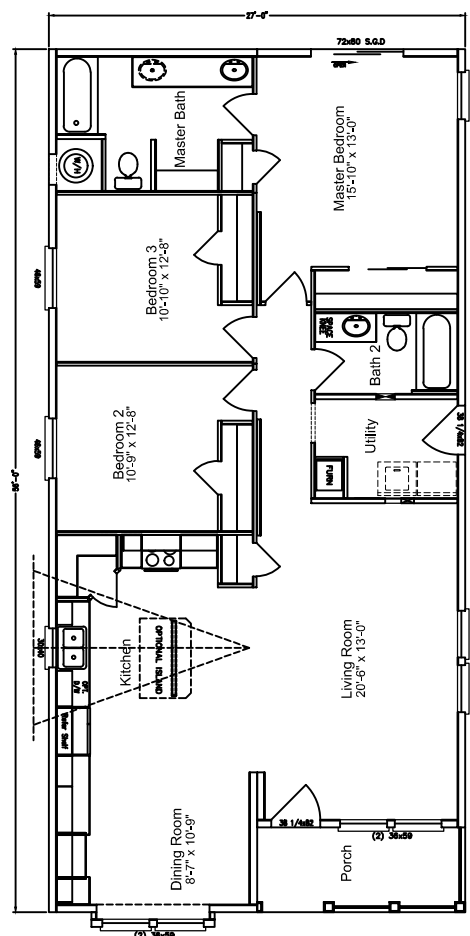
P.E.

3rd Party:

State:

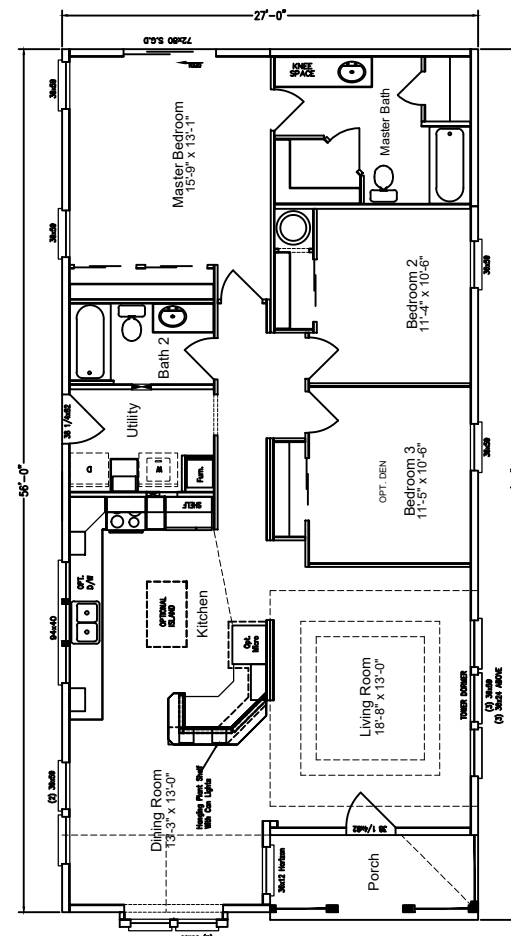
4S100

LOT 3



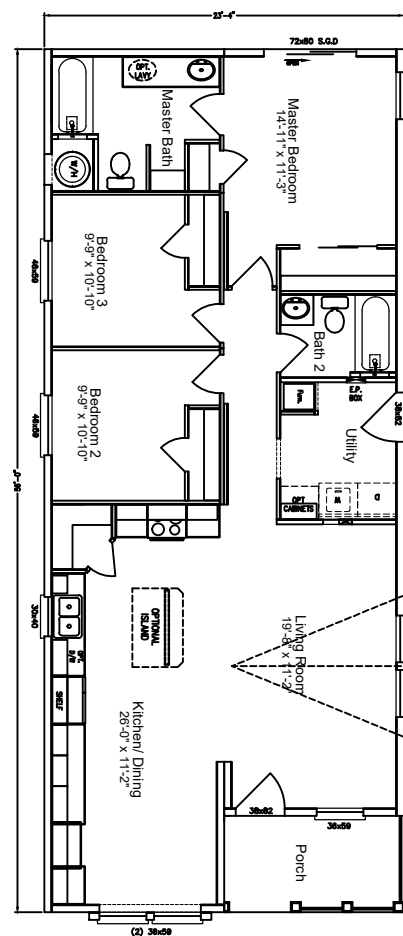
4P56S52

LOT 2



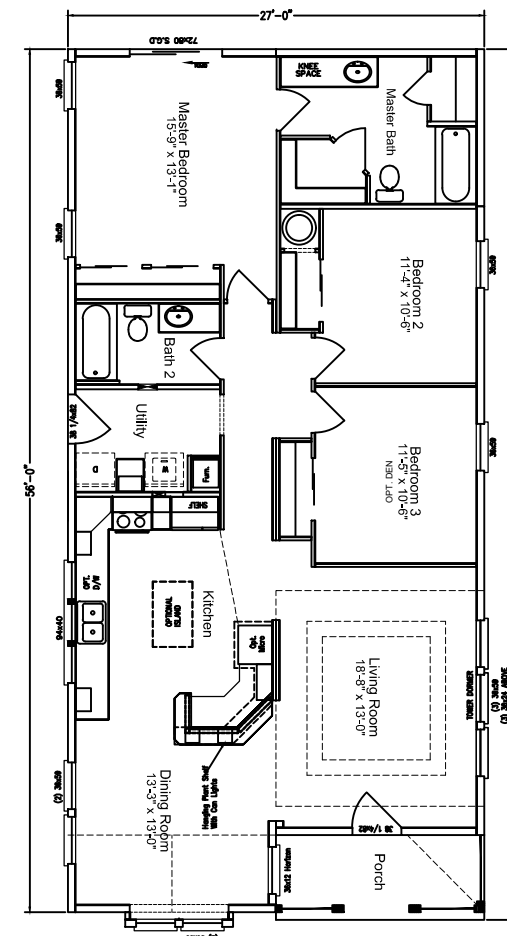
L3S100 Flipped

LOT 1



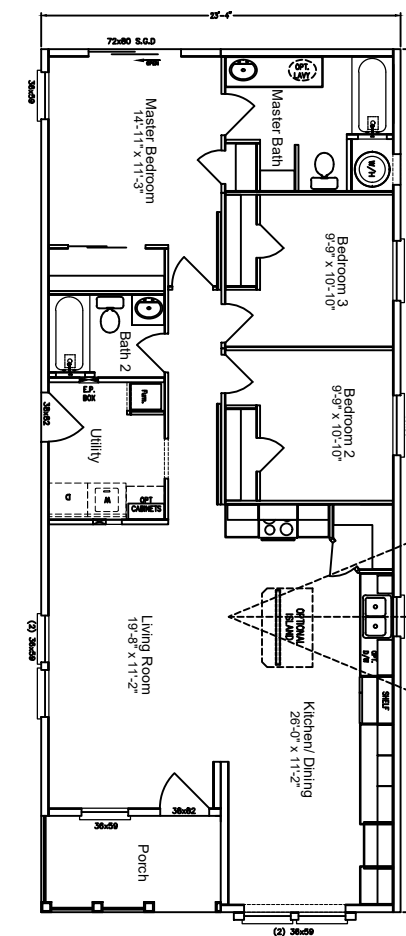
4P56S52

LOT 4



L3S100

LOT 5



Floor Plans

Front Elevations

## Exterior Materials

- Fiber Cement 8" lap siding with cedarmill grain
- Fiber Cement 8" fascia with cedarmill grain
- Fiber Cement 12" soffits with cedarmill grain
- Fiber Cement 4" trim cedarmill grain
- ArmorCoat 4" Trim, windows and corners
- Fiberon Composite porch decking
- IKO Cambridge Composite 20 yr roofing
- Vinyl framed, dual pane thermal broken low e insulated glass from Kinro
- Painted SPF lumber for porch railings and decorative corbels

## Colors Benjamin Moore

---

<u>LOT</u>	<u>BODY</u>	<u>TRIM</u>	<u>ROOF</u>
1	SW 0036 Buckram Binding	7012 Creamy	Dual Brown
2	SW 7029 Agreeable Gray	SW 7074 Software	Harvard Slate
3	SW 7738 Cargo Pants	SW 6207 Retreat	Driftwood
4	SW 6127 Ivoire	SW7004 Snowbound	Dual Brown
5	SW 7719 Fresco Cream	SW 2802 Rookwood Red	Driftwood
**	All deck trim and garage doors will be flat white Color # TBD		

